



## Raindrops to Rainbows

Allison is an ethnobotanist driven to improve access to and quality public open spaces for all Americans. A passion for plants led me to pursue Ethnobotany.



Allison Joyce

While I did learn more about plants, I also gained an increased awareness of the power of people to make positive changes in their lives through increased interaction with natural surroundings from which each unique and valuable human culture was born. Many of society's problems can be alleviated by reinvigorating local, time-tested techniques with our modern capacity for increased

communication and community building. My long-term career goal is to improve collaborative management relationships between public lands and the local people who have relied on and "managed" such lands since long before the federal government stepped in.

She will inform us about the benefits of rainwater management. Rainscaping and gardening are techniques used for directing and filtering rainwater where it falls - the way nature intended. Allison will show us how easily we can do our part to conserve this resource through any combination of plantings, water features, catch basins, and permeable pavement. You won't want to miss this.

### Don't Miss This!

**What: Raindrops to Rainbows**

**Who: Allison Joyce, the Sustainability Programs Coordinator at the Earthways Center of MOBOT**

**When: Tuesday, October 17th, 7—9 p.m.**

**Where: Kirkwood Community Center  
111 S Geyer Rd, Rm #200 A/B  
Kirkwood, MO 63122**



This is a example of rainscaping.





# Rainscaping to Rain Gardens.

## What is Rainscaping?

Rainscaping is any combination of plantings, water features, catch basins, permeable pavement, and other activities that manage stormwater as close as possible to where it falls, rather than moving it elsewhere. In addition to rain gardens and bioswales, a diverse landscape that includes trees, shrubs, perennials, mulch, and amended soils intercepts and disperses rain as it falls and allows more water absorption into the ground and by plants.

## Why Rainscape?

Impervious surfaces such as rooftops and driveways have replaced healthy soils and natural plant communities that once readily absorbed rainwater. The resulting runoff contributes to water pollution, health challenges, and property damage. You can landscape your yard for both beauty and function. Address specific water issues on your property, such as erosion, wet areas of the yard, and difficult-to-mow places, while positively impacting your neighbors and area streams.

## Rain Gardens

A key feature of rainscaping projects is a rain garden, shown below. Rain gardens are designed in a landscape to catch and hold stormwater runoff from surfaces like driveways, roofs, and compacted or large lawn spaces. Rain gardens area also beneficial to yards that experience flooding, ponding, or generally wet areas. When designed properly, a rain garden is an enhancement to your yard, with blooming perennial flowers, plants, native grasses, and boulder features incorporated into the design.




**Design Reflections**  
COLLECTIVE

**"THE AQUATIC SOURCE" • Unique Creations •**  
Design – Installation – Maintenance • Water Gardens / Features / Supplies  
Filtration Systems • Ozone Systems • Pond less • Faux • Fountains  
[sed-dr@charter.net](mailto:sed-dr@charter.net) **636.300.1770**



**(314) 831-0344**

**LAND WORKS, INC.**  
Design • Ponds • Plants • Patios • Walls

**BARCLAY H. COMPTON**  
*President*

3295 Charbonier Rd.  
St. Louis, MO 63031  
[www.landworksnet.com](http://www.landworksnet.com)  
Email: [landworks@sbcglobal.net](mailto:landworks@sbcglobal.net)

*"Water Garden and Landscape Paradise Creations"*







## SLWGS President's Corner

Fall finally has arrived, and it's so lovely to enjoy the garden in the mornings with a cup of coffee in hand! I have been more inclined to complete a few garden and pond jobs with the cooler weather.

Only two more meetings are scheduled for 2023. Greg Heck, our Vice President, will be presiding in my absence as I begin the long trip down the Mississippi, Ohio, Tennessee, Tombigbee Waterway, and Tombigbee River to Mobile, Alabama, and the Gulf by boat. If all goes well, the fall and winter will be in the Keys and Bahamas.

I want to thank all our members for participating in and supporting this year's events. Our dedicated Jewel Box volunteers planted one of the best aquatic displays in recent memory. New signage provides names of plants, and the display of edible

plants in the central pond was well received.

Please remember that the meeting in November's primary goal will be to approve the 2024 budget. Additionally, the election of President and Secretary will be on the ballot. Both positions carry a two-year obligation. Nominations can be submitted to Tom Meier by closing the October membership meeting. If you are interested in running for either position, please contact Tom Meier, Election Chair.

Enjoy the fall season.

Bob Henson  
President, St. Louis Water Garden Society



**COUPON**

**Basket Bucks**

**\$10 off** your purchase of \$60 or more

Take advantage of this great offer and you'll enjoy savings on top of our great service and selection.

Offer expires April 30, 2015.

Proud retailer of quality EzPond aquatic plants

**ezPond**

**Market Basket**

GROCERY • LANDSCAPE • GARDEN

1700 East HWY 50 • O'Fallon, IL 618.632.9055

447 South Buchanan • Edwardsville, IL 618.632.9055

[www.joesmarketbasket.com](http://www.joesmarketbasket.com)

Edwardsville and O'Fallon Locations only

**PONDS PLUS** (636) 946-2242

Water Garden Center

[www.pondsplusstl.com](http://www.pondsplusstl.com)

1757 S. Old Hwy 94

St. Charles, MO 63303



**HOURS**

Mar-Oct (7 Days)  
9 am - 6 pm

Nov-Feb (Fri, Sat, Sun)  
10 am - 5 pm

Pond, Waterfall & Landscape Construction

Aquascape™ **2012 Artist of the Year**



**Nature's Re-Creations**

PONDS & FALLS



Chris Siewing  
636.223.2330

[www.Re-CreateNature.com](http://www.Re-CreateNature.com)  
[Facebook.com/NaturesReCreations](https://Facebook.com/NaturesReCreations)



**MISSOURI POND COMPANY**

@MOPondCo

314-499-2782

<https://mopondco.com>



**HARTKE NURSERY**  
 "Good growing begins here"



1030 N. Warson Rd.  
 St. Louis, MO 63132

**Cindy Collins**  
 Owner, Certified Nurseryman  
 Certified Arborist

(314) 997-6679  
 FAX: (314) 997-6778

E-mail: [hartke@sbcglobal.net](mailto:hartke@sbcglobal.net)  
 Website: [www.hartkenursery.com](http://www.hartkenursery.com)

**Walter Knoll Florist** **LANDSCAPES**

Your Personal Florist and Landscape Specialist Since 1883

Walter Knoll Florist is a full service landscaping company offering

- Plant Maintenance
- Landscaping
- Lawn Service
- Outdoor Lighting
- Walkways
- Driveways
- Paver Installation

And new for 2015  
 • Complete line of grill stations and grill accessories

Give us a call to schedule your appointment.  
 Walter Knoll Florist 314-633-8770

**A Water Garden OASIS**

Let us help you create yours!

- Water Plants, Native Plants
- Perennials, Annuals & Herbs
- Roses, Trees & Flowering Shrubs
- Succulents, Bonsai & Houseplants
- Fruit, Vines & Vegetable Plants

**Effinger Garden Center**  
 "40 Years Serving The Metro East"

720 South 11th St. • Belleville  
 (618) 234-4600  
[www.effingergarden.com](http://www.effingergarden.com)



**PLANTHAVEN FARMS**  
 GARDEN CENTER

[www.planthavenfarms.com](http://www.planthavenfarms.com)




## St. Louis Water Garden Society Calendar of Events 2023

Membership meetings in 2023 will be held on the dates and at the locations listed below between 7 and 9 p.m. Meetings will be held on Tuesdays at the Kirkwood Community Center, Room 200 A/B. There is an elevator.

**October 17th—Raindrops to Rainbows**  
 By Allison Joyce, Earthways Center of MOBOT

**November 14th— Budget—Election of President and Secretary**  
 This year Our Potluck Dinner will be back!

**\*\*\*\* Meeting Location \*\*\*\***

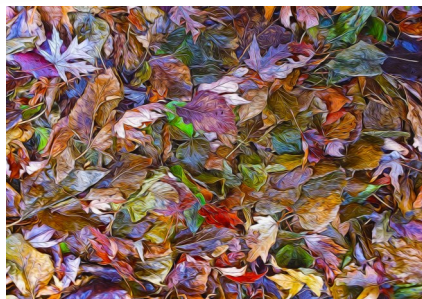
Kirkwood Community Center  
 Rm# 200 A/B  
 111 S Geyer Rd  
 Kirkwood, MO 63122







## Pot Luck Dinner Invite



### Time to Eat, Drink and Be Merry ( And Review, Reflect and Reorganize )

The St Louis Water Garden Society is closing out another successful Year with a traditional end-of-the-year Pot Luck Dinner. It's time to bask in our success and plan for another year! It's a party, but there are important matters to decide as well.

#### Our business will include:

- ♦ Voting on President and Secretary Someone please step up!
- ♦ Approving our budget for 2024

**What:** End-of-the Year Potluck Dinner, Vote on President And Secretary and our Budget for 2024

**When:** November 14, 2023

**Where:** Kirkwood Community Center, Room 200  
111 S Geyer Rd  
Kirkwood, MO 63122

**Who:** All SLWGS members and Guests welcome!

A-G	Salads
H-M	Desserts
N-Z	Side-dish

**Bring a dish to share!** SLWGS will supply meat, beverages and paper goods. Not sure what to bring? Use this handy guide, based on the first letter of your last name.

Call Beverly Maschek, Hospitality chairman at (314) 954-8616, Or email her at [mascheck@sbcglobal.net](mailto:mascheck@sbcglobal.net) to let her know what dish and how many people you'll bring with you.

*Please Come!*



### Feather Flag REMINDERS!

If you have not returned your feather flag, please return it at either the Board meeting on October 10<sup>th</sup> or the General Meeting on October 17<sup>th</sup> at 7:00 PM at the Kirkwood Community Center.

If you are considering being on the Pond-O-Rama 2024 tour, now is a fantastic time to take pictures of your water garden while it is still beautiful.

We need our members to be part of the 2024 Pond-O-Rama committee. Whatever your talent and skills, we are sure it will help make our event spectacular, please call/text Ginny Mueller at 314-808-7000 or email – [vcmueller16@gmail.com](mailto:vcmueller16@gmail.com).



**We have a large selection of colorful Annuals, Perennials and Shrubs!**

2004 West Boulevard  
Belleville, IL 62221  
(618) 235-2004

[sandsbackporch.com](http://sandsbackporch.com)

**WE ARE THE ONLY PROVEN WINNER'S DESTINATION IN THE ENTIRE ST. LOUIS METROPOLITAN AREA!**



**GARDEN-LOU**  
ALL THINGS GARDEN IN ST. LOUIS



Garden-Lou brings St. Louis gardens and gardeners together!  
Featuring private gardens, horticulturists, plant reviews, and local events like  
**Pond-O-Rama**

[www.garden-lou.com](http://www.garden-lou.com)

Find us on facebook and Instagram!



ROLLING RIDGE  
NURSERY

60 NORTH GORE AVE  
WEBSTER GROVES, MO  
314-962-3311  
ROLLINGRIDGENURSERY.COM



**Largest selection of plants in the Midwest!**

**www.sugarcreekgardens.com**

Visit the website to find a wealth of information on plants, gardening and to discover the many benefits gardening has to offer beyond a beautiful yard.

1011 N. Woodlawn  
Kirkwood, MO  
(314) 965-3070



**Voted #1 Best Garden Center**

**Chalily**

Free water hyacinths just for visiting Chalily!!!

**Joe Summers  
Tonya Summers**  
Owners  
14430 Manchester Rd.  
Manchester, MO 63011

T. (636) 527-2001  
E. info@chalily.com  
**www.chalily.com**



**SCHMITTEL'S NURSERY**

13801 Marine Ave. • Maryland Heights, MO 63043  
(across the street from Creve Coeur Park)

**SERVICES**

- Landscape design, consultation, and installation
- Tree and shrub installation
- Products for all your landscaping needs
- Trees, shrubs, perennials, annuals, veggies, fruits, tropicals, and indoor plants
- Bagged and bulk soil, mulch, topsoil, and compost
- Bagged garden soil, fertilizers, and plant food
- Bulk rock, pottery, and more

*For all your landscape needs*

**SPRING HOURS**  
(starting April 1)  
Mon.-Sat., 8 a.m.-5 p.m.  
Sunday, 10 a.m.-4 p.m.

**schmittelnursery.com • (314) 469-8900**

**WEBB'S**  
WATER GARDENS

Shop over 3000 pond products!  
Use code **STL10** and receive  
**10% OFF** on your next order.

**WWW.WEBBSONLINE.COM**




**Water Word** is usually published by the St. Louis Water Garden Society 10 times annually and is distributed to all members. The newsletter contains information about water gardening and fish-keeping, as well as information about SLWGS meetings and activities. Contributions of articles and photos are welcome and should be sent to the Water Word editor listed below. **Documents should be in common text formats, and photos should be in high resolution (300 dpi or higher) jpeg format.** The deadline for submissions is the first of each month.

Information about the Society, including how to join, can be found at our website, [www.slwgs.org](http://www.slwgs.org) or from any of the officers and board members listed:

### 2023 SLWGS Officers

<b>President</b>	Bob Henson	(314) 495-4233	<a href="mailto:hatt8v92@aol.com">hatt8v92@aol.com</a>
<b>Vice President</b>	Greg Heck	(314) 302-0273	<a href="mailto:taraxacum44@gmail.com">taraxacum44@gmail.com</a>
<b>Treasurer</b>	Jerre Baynes	(314) 775-5453	<a href="mailto:baynes_j@swbell.net">baynes_j@swbell.net</a>
<b>Recording Secretary</b>	Sophia Cluck	(636) 530-1726	<a href="mailto:rodie0415@gmail.com">rodie0415@gmail.com</a>

### 2023 Board Members

<b>Publicity Chairman</b>	Ginny Mueller	(314) 808-7000	<a href="mailto:vcmueller16@gmail.com">vcmueller16@gmail.com</a>
<b>Special Events Chair</b>	Laurel Walle	(314) 898-7216	<a href="mailto:lollysnorkels@gmail.com">lollysnorkels@gmail.com</a>
	Kathie Soehngen	(314) 894-0981	<a href="mailto:kasoeing@sbcglobal.net">kasoeing@sbcglobal.net</a>
<b>Society Shirt Sales Chairman</b>	Gail Abernathy	(314) 427-7076	<a href="mailto:abernat@swbell.net">abernat@swbell.net</a>
<b>Membership/E-mail Chairman</b>	Gail Abernathy	(314) 427-7076	<a href="mailto:abernat@swbell.net">abernat@swbell.net</a>
<b>Jewel Box Chairman</b>	Kay Miskell	(618) 344-6216	<a href="mailto:km99@att.net">km99@att.net</a>
<b>Water Word Editor</b>	Gail Abernathy	(314) 427-7076	<a href="mailto:abernat@swbell.net">abernat@swbell.net</a>
<b>Website Chairman</b>	Ginny Mueller	(314) 808-7000	<a href="mailto:vcmueller16@gmail.com">vcmueller16@gmail.com</a>
<b>Pond-O-Rama Chairman</b>	Ginny Mueller	(314) 808-7000	<a href="mailto:vcmueller16@gmail.com">vcmueller16@gmail.com</a>
<b>Parliamentarian</b>	Carol Greminger	(314) 487-9119	<a href="mailto:carolnron@att.net">carolnron@att.net</a>
<b>Historian</b>	Betsy Meier	(636) 405-1120	<a href="mailto:lidodeck@att.net">lidodeck@att.net</a>
<b>Hospitality Chairman</b>	Bev Maschek	(314) 954-8616	<a href="mailto:maschek@sbcglobal.net">maschek@sbcglobal.net</a>

### Member-at-Large

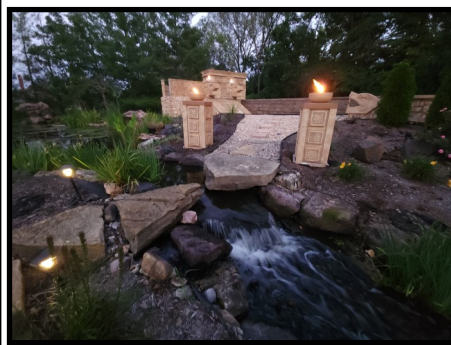
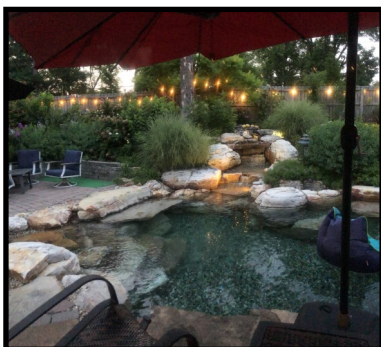
Carolyn Haus	(314) 993-0985	<a href="mailto:chaus2016@gmail.com">chaus2016@gmail.com</a>
Keith Haus	(314) 993-0985	<a href="mailto:keithhaus33@gmail.com">keithhaus33@gmail.com</a>
Jim Haegele	(636) 349-5511	<a href="mailto:jimhaegele@gmail.com">jimhaegele@gmail.com</a>





## Did you miss Tiki ?

More photo's of Tiki Tour will be in the January *Water Word*



At our November meeting, voting will take place for the president and the secretary. The last time nominations will be accepted is at the end of the October meeting. Nominations must be sent to Tom Meier at [ufo.kites@att.net](mailto:ufo.kites@att.net) before that time. No nominations will be accepted after that. Please be sure that the person you nominate has agreed to accept the nomination.

### Free Give Aways

**Jim Haegele** 636-349-5511

Bamboo shoots for the taking, call Jim Haegele

**Jane Sykes** 314-750-7492

Water hyacinth and mosquito fish for free, call Jane Sykes

## Members' Corner:

**Happy Birthday to all October members below and not listed.**

John Lena	10/4
Paul Bailor	10/5
Joan Hummel	10/5
Lois Tobin	10/11
Susy Alias	10/16
Julie Young	10/16
Joe Zimmerman	10/27
Catherine Mayer	10/31



## Membership Bonus

International Waterlily & Water Gardening Society

Here is the link to their site and the login information. [www.iwgs.org](http://www.iwgs.org)

**Login: SLWGS**

**Password: slwgs20**



2541 LINK ROAD, ST. LOUIS, MO 63114  
314-426-4838, [www.mprsupply.com](http://www.mprsupply.com)

**AUTHORIZED**  
**Aquascape PRO**  
DISTRIBUTOR



Unique Creations of...

Landscape Design • Installation • Maintenance  
Water Gardens • Fountains • Lighting • Atriums  
Stonework • Retaining Walls • Patios • Irrigation

[scd-dr@charter.net](mailto:scd-dr@charter.net)

John C. Saul  
636-300-1770





## Netting your Pond for Fall and Winter

Netting your pond for fall and winter is an effective way to prevent leaves and debris from entering the water, which can help maintain water quality and protect fish and aquatic life.

Here are steps to net your pond for the fall and winter:

**Choose the Right Pond Net:** Select a sturdy and fine-mesh pond net that can effectively catch leaves and debris. Make sure it is large enough to cover your entire pond.

**Gather Necessary Tools and Materials:** You'll need the pond net, stakes or anchors, and a mallet or hammer to secure the net.

**Measure and Cut the Net:** Measure the dimensions of your pond to determine the net size you need. b. Cut the net to the appropriate size, leaving excess on each side to ensure complete coverage.

**Remove Existing Debris:** Before installing the net, clean the pond surface to remove any existing leaves and debris.

**Place the Net Over the Pond:** Carefully drape the cut net over the pond's surface, ensuring it covers the entire water area. Make sure the net is taut and evenly spread out. You can use stakes or anchors to hold the net along the edges.

**Secure the Net:** Use stakes or anchors to secure the net regularly along the pond's perimeter. Ensure the net is pulled tight to prevent leaves and debris from falling into the water.

**Trim Excess Netting:** Trim any excess netting hanging over the pond's edges but leaving enough to secure it.

**Check and Adjust as Needed:** Regularly inspect the net throughout the fall and winter to ensure it remains in place and effective. Remove any accumulated debris on top of the net to prevent it from sinking into the water.

**Remove the Net in Spring:** As spring approaches and the risk of falling leaves diminishes, carefully remove the net. Clean and store the net for future use.

### Spring Pond Maintenance:

After removing the net, perform a thorough spring pond cleaning, including removing any debris that may have accumulated on the bottom during the winter.

Netting your pond for fall and winter is a proactive way to protect it and its inhabitants from the potentially harmful effects of leaf buildup. Proper installation and regular maintenance of the net are essential for its effectiveness.







# How to Winter over a Tropical Water Lily

**#1: Remove your potted tropical water lily from the pond.** You can leave the pot outside if the outside air temperature is above 50 degrees. If it is below 50 degrees, move your plant to a warmer location indoors.

**#2: After the plant has dried for one week, it's time to remove all the soil, roots, and leaves.** You are looking for the tuber, which is directly under the center of the plant. The tuber can range from the size of a marble to the size of a baseball.

**#3: Wash off all the soil and cut any roots or leaves.** After a good cleaning, allow the tuber to air-dry overnight.

**#4: Moisten clean sand.** Be sure the sand is barely damp (not wet). If the sand is too wet, the tubers will rot.

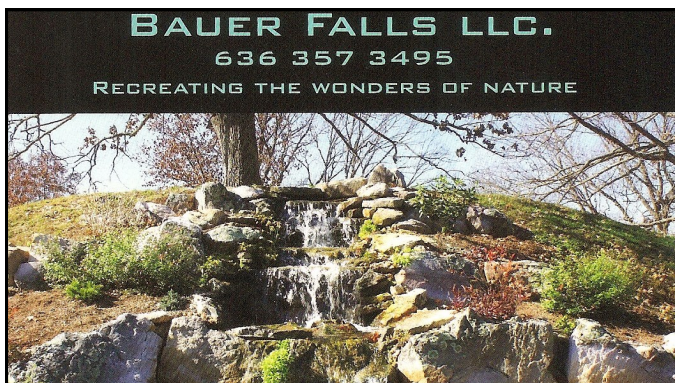
**#5: Pack the tubers in an airtight container.** Place a layer of moistened sand in the bottom and then a tuber. Add more sand to fill the container and seal. Label the outside of the container.

**#6: Place the tuber containers in a cool, dark place.** The temperature should be between 50 and 70 degrees. A basement is an ideal location.

**#7: Check your container about once per month.** You are looking for mold or rotting tubers. If your tubers are soft, discard them. If they have mold, wash it off and allow the tuber to dry overnight. Then, store the tuber in new sand.

You can leave tubers in storage for up to five years as long as they remain firm and healthy. If you want to replant them, brush off the sand from the firm tuber, place it in the same pot and soil it was in before, and place it in your pond. Ensure the water temperature is warm enough (60 degrees at least) before you put the annual plants back in the pond.

*Written by Lily Summers  
Off Chalily's website*





**Inside this edition:**

Raindrops to Rainbows .....	Page 1
Rainscaping to Rain Gardens .....	Page 2
SLWGS President’s Corner .....	Page 3
SLWGS Calendar of Events 2023 .....	Page 4
Pot Luck Dinner Invite .....	Page 5
Feather Flag Reminders! .....	Page 5
2023 SLWGS Officers & Board Members ....	Page 6
Did you Miss Tiki? .....	Page 7
Members Corner .....	Page 7
Netting your Pond for Fall and Winter .....	Page 8
How to Winter over a Tropical Water Lily .....	Page 9
Photo of the Month .....	Page 10

**Photo of the Month**



***The Art of the Matter***—This beautiful Victoria waterlily was photographed at the Jewel Box by Gail Abernathy. A few deft touches of her digital “paintbrush” turned the otherwise ordinary photo into an artistic masterpiece!

